



Migrate from ALM to QMetry



Overview

Migration between tools is a daunting, cumbersome, and expensive process. But it is an inevitable reality with many legacy products and tools like Micro Focus ALM and Quality Center (HP QC) weighing down your digital transformation efforts.

If you are an existing ALM user currently considering the move, but concerned about the legacy test management migration process, QMetry has established a tried and tested migration from Micro Focus ALM (HP QC).

Reasons to consider the Migration

✓ High maintenance and limited scalability

The major concern with HP ALM is that it ended the support for quality assurance tools which is HP QC. This requires enterprises to consider migrating from legacy test management tools to contemporary tools.

However, the migration is challenging because it involves a paradigm shift in the base methodologies. The older ALM tools were more suited for manual testing while the modern tools cater to the Agile and DevOps mindset. Moreover, new tools and their multi-platform solution offer several integrations through Open REST APIs.

This results in a complicated process of legacy ALM migration, changes to infrastructure and additional maintenance. There is no easy or straight workaround for this except QC ALM migration to modern tools.



✓ Actionable Quality Metrics

Organizations are now moving to tools that support a continuous innovation cycle right from test case authoring and execution to test automation. Shorter release cycles and faster go to market times dictate a need for visibility and traceability.

In such a scenario, enterprises need actionable quality analytics and insights that empower them to take the right decisions. Tools that support custom dashboards, advanced reporting and complex visual analysis of data help measure and monitor test activities and execution status. Continuous innovation cycle from test case authoring and execution to test automation plays a major role. With that, new features using AI/ML empowers quality engineers and quality groups to make some actionable intelligence.

This creates the much-needed collaboration across different groups resulting in better visibility to higher or executive management.



✓ Pace of digital and continuous testing

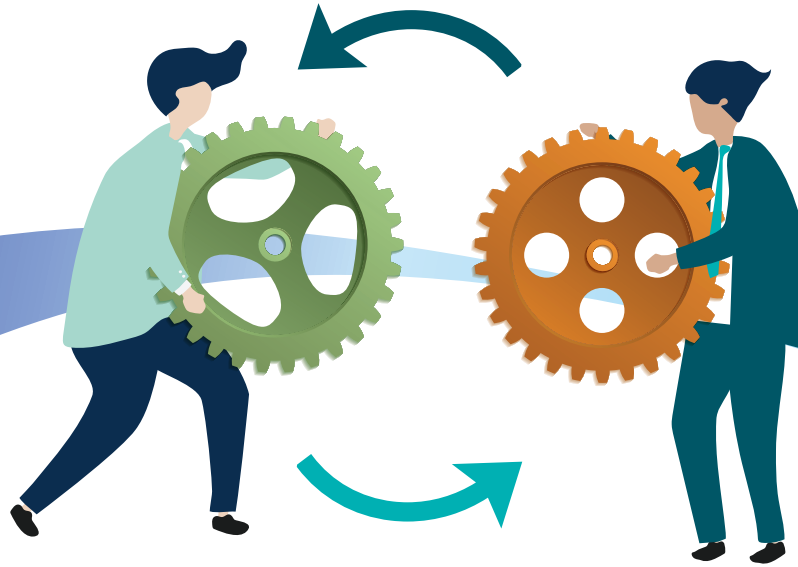
Modern testers have modern challenges. This means the tools they use have to keep up. Digital transformation thrives on speed and quality. It enables organizations to release products before the competition does. Many leaders have adopted the DevOps methodology to balance quality and speed of innovation.

DevOps achieves this by using Continuous Deployment and orchestrating a CI/CD pipeline. It enables the quality + speed goals by promoting test automation with the help of continuous testing.

Continuous Testing requires faster feedback loops and implementing automated tests at every stage in the SDLC. The more insights that are revealed from each test, the faster the bug fixes and product improvement. Legacy test management tools do not fully support integration with CI/CD tool and automation suites.



Our approach



QMetry has well-defined migration system supported by migration utility, process, and people engagement to change their mindset towards better tool.



Discovery sessions

We start by conducting discover sessions with various groups like TCoE, automation, PMO, KPI reporting stakeholders who are using Micro Focus Quality Center (HP QC). After that, we study the manual/automated QA processes and a detailed analysis of ALM and Jira.



Project Scope

Our team at QMetry will analyse the scope, requirements, and business objectives for your Micro Focus QC/ALM to Jira/QMetry migration project. Based on the type of migration required, that is - in-kind, process improvement, multi-tool integration etc. we will chart out a migration plan and dependencies. Our plan will also include mapping of relevant test assets, integrations, reports, and dependencies.



Defining the upgrade criteria

We evaluate the upgrade criteria including the infrastructure requirements, versions, validation rules and downtime. We consult with our clients to select the best migration option, well-suited for their needs and the upgrade approach and type.



Configuration

We will configure Jira projects with the required degree of customization (with custom fields, user-ids, workflows, access control, projects, sprints etc.). Next, we will identify and configure the QMetry apps that are needed for the migration. Once this is set up, we will create various types of test assets manually to validate the configuration.



POC Migration

After configuration, we export the data from Micro Focus QC/ALM into Jira and validate the migration, followed by updating the migration scripts and domain migration. This is followed by UAT and production implementation.



Post Migration Training and Support

Once migration has been validated, we conduct Jira and QMetry training for team members. We check the proof of concept with a 'first project' adoption and report validation followed by all other projects.



Key Features



Better ROI - 30 %
within 18 months of
making the change



Scalable, future ready,
open architecture tool



Better integrations with CI/CD
tools like Jira, Azure DevOps,
Jenkins, Bamboo, Maven, etc.



Reusability, Traceability
& extensive test
coverage



Full visibility & actionable
insights through quality
metrics



Established Micro Focus
Quality Center to QMetry
Migration process

Free Consultation

If you are curious to know how you can set about this migration, then QMetry's expert team will meet your QA teams at no charge to help you evaluate your options for migrating from Micro Focus Quality Center (HP QC) or HP ALM to QMetry. We will offer the best solution for your specific needs.

[Get a Free Consultation](#)

* All logos/trademarks/product names used in this document belongs to their respective owner. Information represented here is based on the general information available on the internet and public sources.